

STIMSON

A DEEP DIVE INTO ARUBA'S CLIMATE RISKS

EXECUTIVE WORKSHOP



Ministry of Transport, Integrity,
Nature and Senior Affairs



MEETING AGENDA

OCTOBER 30, 2024

STIMSON

Executive Workshop: A deep dive into Aruba's Climate Risks

8.30am - 9.00am

Registration & Light Breakfast

9.00am - 9.15am

Welcome & Opening Remarks

by Dr. Ryan Peterson & Minister Ursell Arends

9.15am - 9.30am

Overview of CORVI Aruba

by Sally Yozell, Director Environmental Security

9.30am - 9.45am

CORVI Methodology

by Tracy Rouleau, Non-Resident Fellow

BREAK

10.00am - 11.45am

Stakeholder Discussion

Interactive Session

11.45am - 12.00pm

Wrap-up & Closing

by Sally Yozell, Tracy Rouleau, & Dr. Ryan Peterson

12.00pm

Light Lunch



Ministry of Transport, Integrity,
Nature and Senior Affairs





MINISTER URSELL ARENDS

STIMSON



SALLY YOZELL

DIRECTOR ENVIRONMENTAL SECURITY



TRACY ROULEAU

NON-RESIDENT FELLOW

Overview of CORVI Aruba Assessment

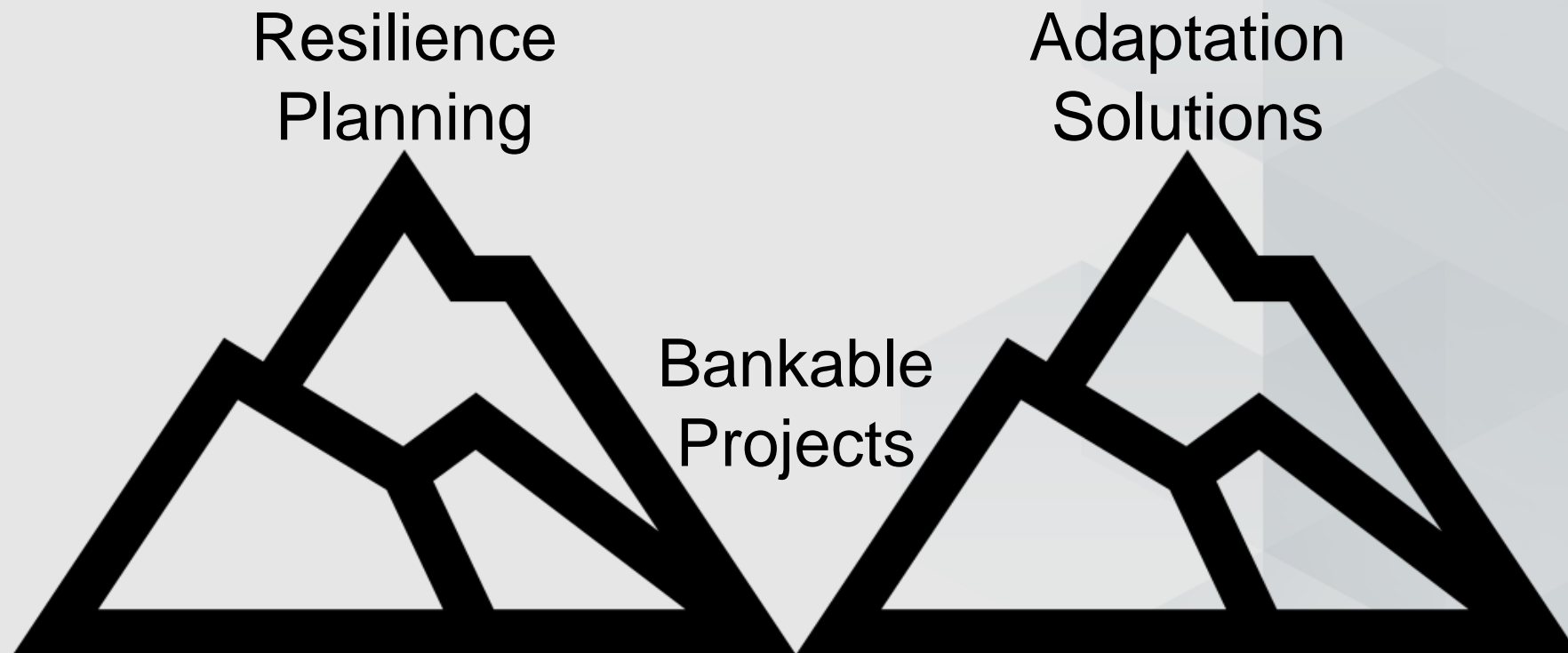
PRIORITIZING ACTION FOR COASTAL COMMUNITIES

Coastal Communities Exposed to the Climate Crisis



Bridging the Gap

30
years



Introducing CORVI

- ▶ Integrates economic, social, and environmental data
- ▶ Produce a holistic assessment to assess resilience to climate and ocean risks.
- ▶ CORVI is:
 - ▶ Three types of risk
 - ▶ 10 risk categories
 - ▶ Nearly 100 indicators



Coastal Community Assessments

30



Legend

● - Full assessment

▲ - Rapid assessment

■ - Completed

■ - In-progress



How CORVI is Different



- ▶ **Locally-Based:** provides subnational level detail on nature and impact of climate and ocean risks
- ▶ **Holistic:** looks across broad set of ecological, economic, and social risk factors connected to climate impacts
- ▶ **Data-Driven:** using SEJ, CORVI fills data gaps to produce actionable insights in data-sparse environments



CORVI Benefits



► For Governments

- Local adaptation plans (e.g., Mombasa)
- City master planning and infrastructure development (e.g., Chattogram)
- Inform policymaking (e.g., St. Kitts and Nevis)

► For Local Businesses

- Understand risks to supply chains and operations

► For International Financial Institutions

- Inform fiscal planning (e.g., IMF)
- Integrate climate adaptation into development planning (e.g., World Bank, regional development banks)



New Health Category



CORVI Indicators	
Access to Healthcare	Mortality rate attributed to non-communicable diseases
Cases of Infectious Disease Cases	Mortality rate attributed to unsafe water, unsafe sanitation and lack of hygiene
Health worker density and distribution	Percent of population at risk of mental health disorders and stress-related disorders
Mortality attributed to heat	Percent of population experiencing moderate or severe food insecurity



STIMSON



CORVI Methodology

PRIORITIZING ACTION FOR COASTAL COMMUNITIES

Coastal Communities Exposed to the Climate Crisis



Assessing Climate Vulnerability at the Local Level

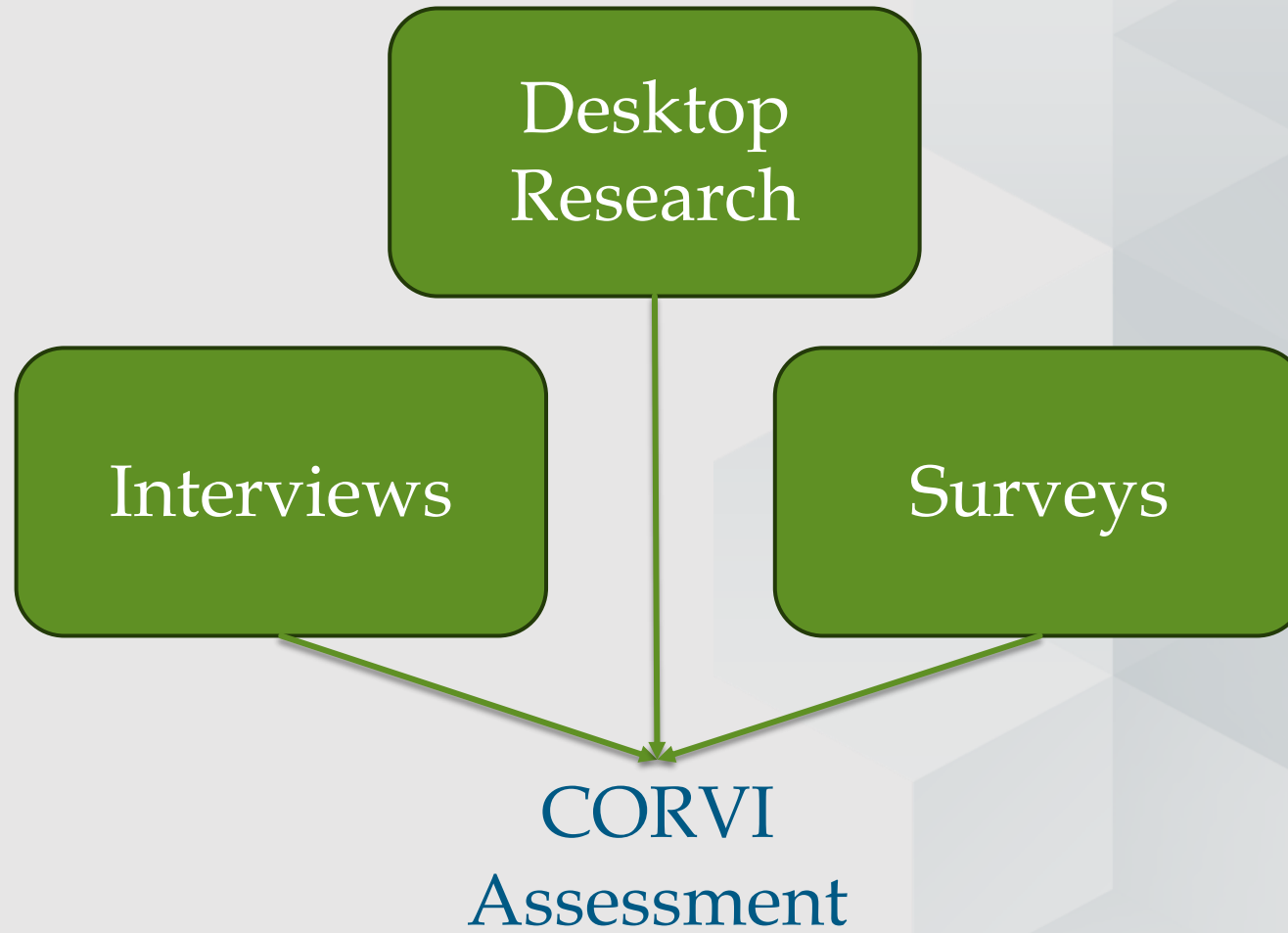
$$\text{Risk}_x = f(\text{Hazard}_x, \text{Exposure}_x, \text{Vulnerability}_x)$$

- ▶ Granular data on vulnerability to climate change is often not available
- ▶ CORVI maps this vulnerability in social, economic, and environmental systems at the local-level



Tropical cyclone in Havana

Three Streams of Data



Overview of In-Country Data Collection

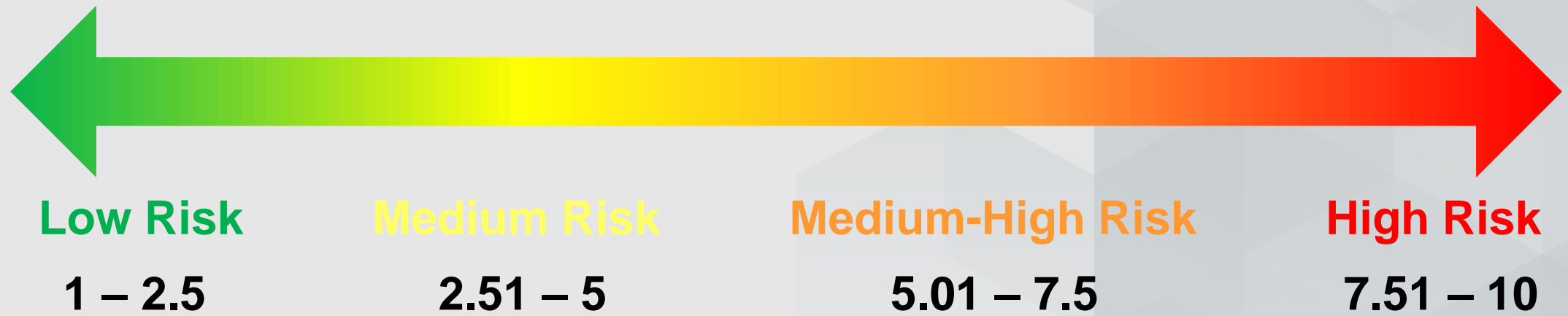


- ▶ **Purpose:** To fill gaps in pre-existing datasets, develop indicator scores, provide understanding of vulnerabilities on the ground
- ▶ **Objective:** Quantify and contextualize localized risk when existing empirical data is inadequate
- ▶ **Method:** Surveys and Semi-Structured Interviews



Categorizing Risk Scores

30
years



CORVI Protocol

30
years



*Break
(15 minutes)*

Discuss Climate Risks and Vulnerabilities in Aruba

PRIORITIZING ACTION FOR COASTAL COMMUNITIES

Rules of the Game



- ▶ Choose a lead facilitator
 - ▶ Lead discussion
 - ▶ Make sure everyone has a chance to speak
- ▶ Choose a note taker
 - ▶ Summarize and records conversation
 - ▶ Supports lead presenter with note cards
- ▶ Choose a lead presenter
 - ▶ Provides 3-minute summary of discussion questions



Key Discussion Questions



- ▶ Based on what you see in your daily work and experience, what do you see as the greatest risks facing Aruba from climate change?
- ▶ Who or what is most vulnerable to these risks? *By vulnerable we mean who or what is most likely to be harmed by the impacts of climate change—people, businesses, or parts of the environment that may be particularly sensitive to the impacts (like extreme heat), or have difficulty adapting to the changes.*
- ▶ What do you know about efforts that are currently underway to reduce or mitigate climate risk in Aruba? What other opportunities are there?



Discussion Presentations

LEAD PRESENTERS 3-MINUTES EACH TABLE

Wrap-up and Close

PRIORITIZING ACTION FOR COASTAL COMMUNITIES

Contact Information

Dr. Ryan R. Peterson

Chair, National Climate Resilience Council (NCRC)

climate@ncrc-aruba.org



THANK YOU!

STIMSON



Ministry of Transport, Integrity,
Nature and Senior Affairs

